




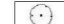


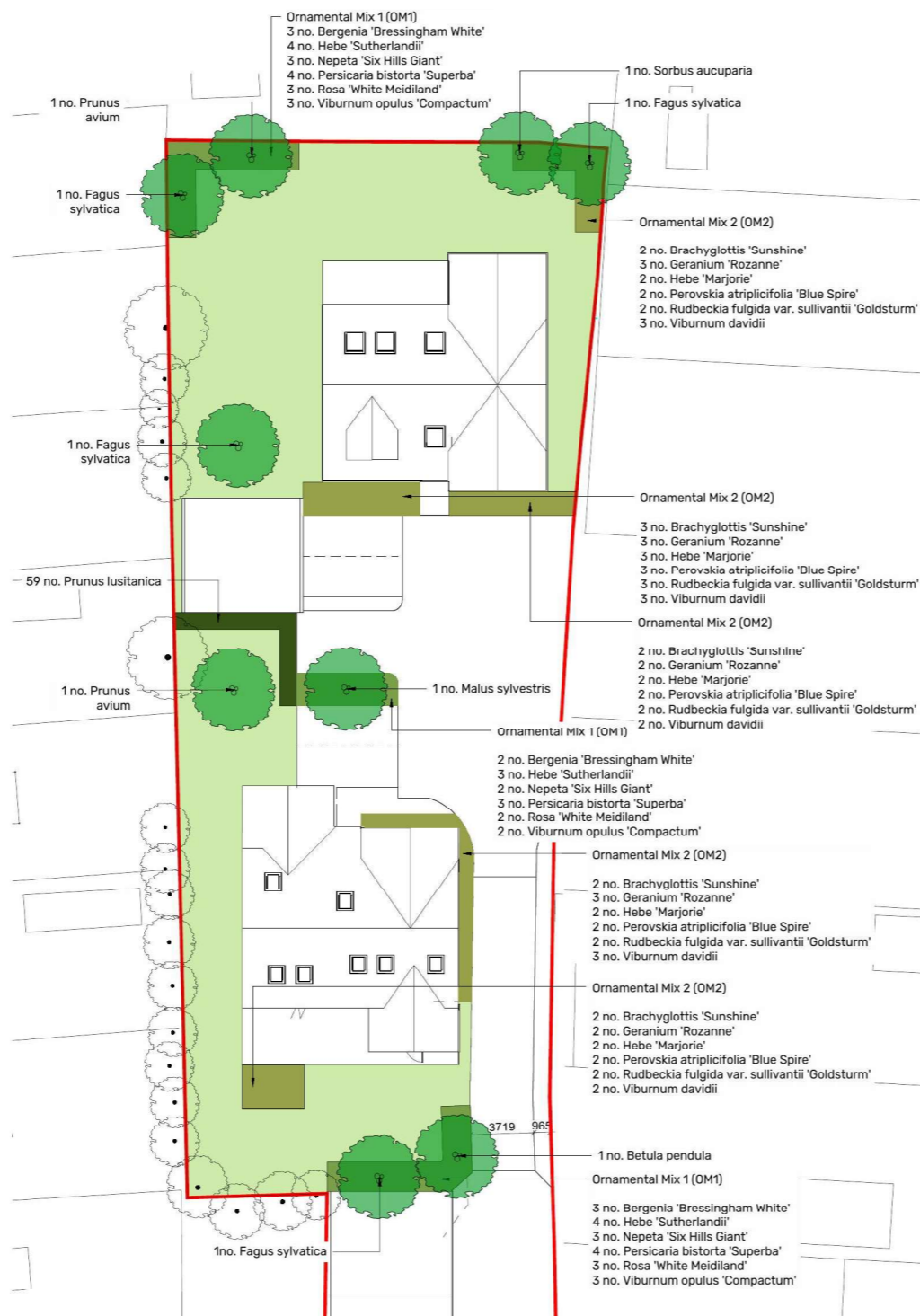
-  Hedge
-  Ornamental Mix 1 [OM1]
-  Ornamental Mix 2 [OM2]
-  Turf [rear and front gardens]
-  Proposed Trees
-  Existing Trees

Tree Planting				
Species	Height	Girth	Root	No
Betula pendula	450-600cm	18-20cm	RB	1
Fagus sylvatica	450-600cm	18-20cm	RB	4
Malus sylvestris	350-425cm	12-14cm	RB	1
Prunus avium	450-600cm	18-20cm	RB	2
Sorbus aucuparia	450-600cm	18-20cm	RB	1
Total				9

Hedges				
SPECIES	Height	Pot	Density	No
Prunus lusitanica	40-60cm	5L	5/m	59
Total				59

Ornamental Mix 1 (OM1)				
SPECIES	Height	Pot	% Mix	No
Dergenia 'Bressingham White'	20-30cm	2L	15	8
Hebe 'Sutherlandii'	20-30cm	3L	20	11
Nepeta 'Six Hills Giant'	20-30cm	5L	15	8
Persicaria bistorta 'Superba'	20-30cm	2L	20	11
Rosa 'White Meidiland'	20-30cm	3L	15	8
Viburnum opulus 'Compactum'	30-40cm	5L	15	8
Total				54

Ornamental Mix 2 (OM2)				
SPECIES	Height	Pot	% Mix	No
Brachyglottis 'Sunshine'	30-40cm	5L	15	11
Geranium 'Rozanne'	30-40cm	2L	20	13
Hebe 'Marjorie'	30-40cm	3L	15	11
Perovskia atriplicifolia 'Blue Spire'	30-40cm	3L	15	11
Rudbeckia fulgida var. sullivantii 'Goldsturm'	30-40cm	2L	15	11
Viburnum davidii	20-30cm	5L	20	13
Total				70



©One-Environments Ltd. This drawing is not to be scaled. All dimensions to be verified on site prior to commencement of works. Discrepancies, ambiguities and/or omissions between this drawing & information supplied by others must be reported immediately for clarification before proceeding.

NOTES

OUTLINE PLANTING SPECIFICATION

Generally
 All soft landscape operations are to be undertaken during the first available planting season, immediately following completion of all construction operations, or in accordance with any planning approval/conditions, whichever is most applicable.

All setting out of trees, shrubs and grass within new soft landscape areas shall be inspected and approved by the Landscape Architect prior to planting operations commencing.

Prior to planting, all earthworks associated with landscape operations are to be made good, levels graded to top of back of kerb and mounded as appropriate using approved topsoil as required.

Existing topsoiled areas to be subsoil cultivated to a minimum depth of 450mm (where services allow) prior to topsoil cultivation to a minimum depth of 350mm in all areas.

Remove all deleterious arisings from above cultivations, together with all surface debris currently on site.

In all new topsoil areas, excavate to 450mm minimum depth for planting areas. Cultivate a further 250mm to relieve compaction in all areas.

Replace above excavations with approved quality topsoil to the following minimum depths:

Topsoil [150mm depth] - Amenity Grass
 Min. 150mm screened premium natural topsoil of sandy/clay loam classification to BS3882:2015. Topsoil mix laid on sandy subsoil to BS8601.

Topsoil [450mm depth] - Ornamental Planting at Grade
 Min. 450mm screened premium natural topsoil of sandy/clay loam classification to BS3882:2015. Topsoil mix laid on sandy subsoil to BS8601.

Topsoil [600mm depth] - Ornamental Planting to Raised Planters
 600mm screened premium natural topsoil of sandy/clay loam classification to BS3882:2015. Topsoil mix laid on min. 100mm sandy subsoil to BS8601.

Finished levels of topsoil after settlement to be 50mm above adjacent hard paved areas in all instances.

Trees

Excavate tree pits for trees as follows:

Specification	Girth	Size	Depth
All trees	-	1000mm Ø	750mm

Tree pit sizes should be increased where necessary to ensure pits are at least 300mm wider and 75mm deeper than the tree root system when fully spread.

Tree stakes - Extra heavy standard trees to be double staked with 75mm x 1800mm pressure treated tree stakes secured to cross member with tree belt.
 Heavy standard - Light standard trees to be single staked with 75mm x 1800mm pressure treated tree stake secured to cross member with tree belt.

Backfill - backfill pits with 450mm minimum depth imported sandy loam topsoil to BS3882:2015, laid over 350mm minimum depth imported sandy subsoil to BS8601:2013. Base of tree pit to incorporate 200mm depth clean gravel aggregate base layer.

Watering - trees should be watered once a month regardless of weather conditions during the defects liability period in the growing season to ensure that the trees are encouraged to develop the root system.
 Water at the following rates:

120 litres per tree

In periods of drought, additional watering should be carried out in sufficient quantities to ensure and maintain healthy growth and establishment.

Shrub/ Perennial Planting

As scheduled, container grown unless otherwise specified and to be planted evenly spaced at the densities indicated.

Backfill - backfill pits with screened premium natural topsoil of sandy/clay loam classification to BS3882:2015 to depths as specified. Topsoil mix laid on sandy subsoil to BS8601.

Watering - water all plants thoroughly immediately following planting using a fine rose sprinkler.

Mulch - where agreed, supply and spread minimum 50mm thick, thoroughly composted bark or equivalent organic mulch.

Grassed Areas

Amenity grass area to be cultivated turf

Finished levels of topsoil after settlement are to be 50mm above adjacent hard paved areas in all instances.

Refer to the following British Standards for more detailed information:
 • Recommendations for transplanting rootballed trees
 BS 4043
 • Code of practice for general landscape operations
 BS4429
 • Specifications for topsoil BS 3882:2015 Topsoil in accordance with specification
 Nursery Stock BS 3936 part 1.

REVISION	NO.	DATE	BY	TI	CHECKED	AC	
Updated in line with revise plan							
REVISION	P02	DATE	13.03.23	BY	ME	CHECKED	AC
Extra trees added to both plots and species amended							
REVISION	P01	DATE	22.02.23	BY	KJ	CHECKED	ME
First Issue							
CLIENT	Create Architecture						
PROJECT	239 Oxbridge Close						
TITLE	Detailed Planting Plan						
DWG No.	N1298-ONE-ZZ-XX-DR-L-0201	REV	P03				
STATUS	PRELIMINARY						
SCALE	1:200	@	A2	DATE	22.02.23	DRN BY	KJ

